

THE SUBDIVISION SUPREME

# Rossini Court Parkways



LOCATION with reference to the residential and industrial areas, width of boulevards, selection of shade trees, breadth and depth of lots, and the exclusive playgrounds, are all elements that make for the aesthetic and promise returns to the investor, or the prospective home builder. These are combined in our two developments—Rossini Courts Parkways and Westminster Boulevard.

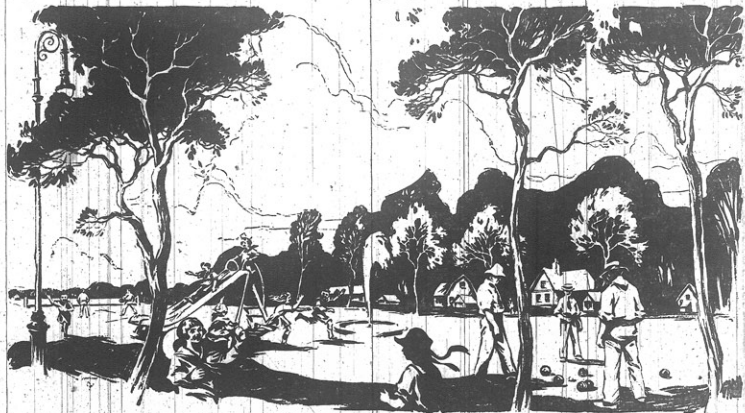
VALUES of property are dependent primarily upon location. That is the force that yields the profits to the investor. Before purchasing elsewhere view this property, compare the location, and the prices with respect to other properties that are being offered. Rossini Courts Parkways is a projection of the Border Cities' most beautiful street. Values have gone up five fold in a comparatively short interval in the older sections of this thoroughfare. Exclusive restrictions. The history of Ford City properties is that not a single restricted lot in this municipality but has shown a substantial increase in value each year.

## WESTMINSTER BOULEVARD

ANOTHER great residential area, highly restricted, just across the Tecumseh Road from the Ford City Limits. All local improvements are assured within a comparatively short time, a factor that makes for quick returns. Westminster Boulevard itself is 100 feet wide.

That should appeal to the Prospective Home Builder.

**Some Lots as Low  
as \$400**



Perspective View of Playcourts

*"Look for the Brown and White Signs when Motoring on Tecumseh Road"*

# St. Pierre Realty Company

Rossini Courts Parkways

Phone: Burnside 1800

Westminster Boulevard

Ford City

Ottawa Avenue  
at Pilette Road

FORD CITY, through its LOCAL IMPROVEMENT program just approved will hereafter take full advantage of its opportunities. (Where seven years ago there were farm lands along the Drouillard Road, for instance, property is now selling for more per foot front than it commanded per acre. Had the local improvements been put in from the outset Ford City would have had a population of 30,000 today.)

The new policy to keep pace with its phenomenal industrial growth means an unprecedented development, unprecedented in any city in Canada. That is a warranty in itself of what the new sections will do. Consequently this new policy of Ford City means that values are certain to rise and rise quickly.

## Literature

We will be pleased to forward literature on request. We prefer, however, to show you the property. Our fleet of automobiles is at your disposal. Just telephone for an appointment.

## Agents Wanted

on full or part time. Experience is not necessary. Let us explain our sales plan to you.